



EUROPEAN ANTENNAS

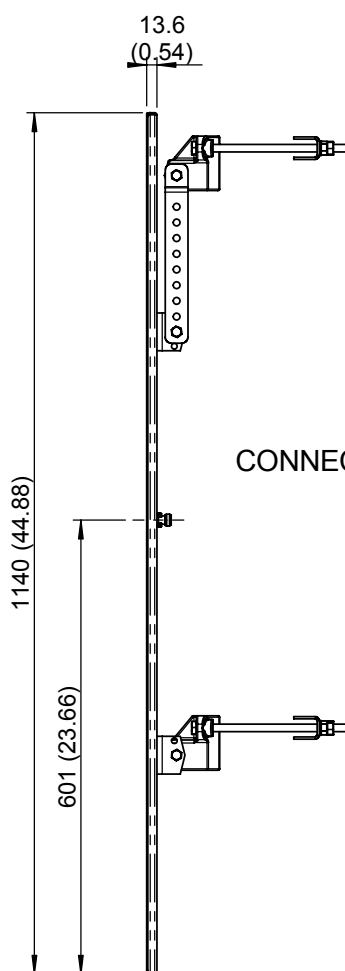
Excellence through design
Creative in concept

SECTOR ANTENNA

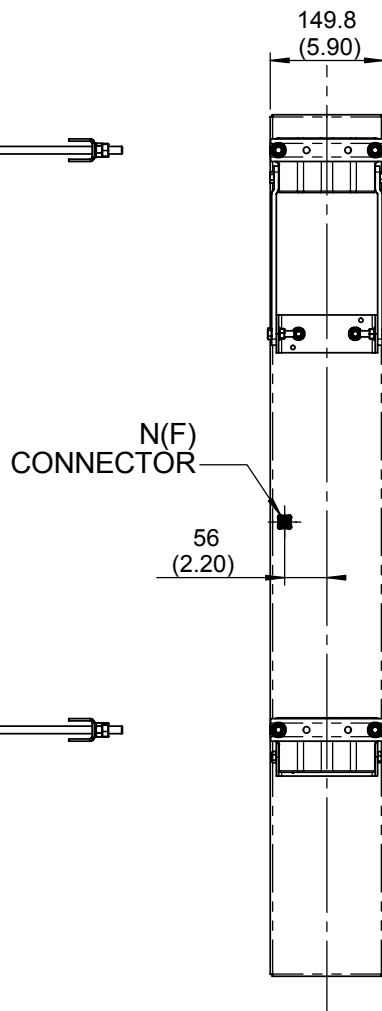
MODEL: SA17-22V/555

FREQUENCY:	2.0 - 2.3 GHz	GAIN:	17 dBi
POLARISATION:	Linear (Vertical)	BEAMWIDTH:	65° x 8° Approx.
CROSS POLAR:	20 dB	VSWR:	1.5 : 1 Typical, 2 : 1 Max.
POWER RATING:	25 W	FRONT TO BACK:	25 dB
TEMPERATURE:	-20° to +50°C	MASS:	2.4 Kg / 5.28 lbs (Excl. brackets)
RADOME:	Glass Fibre/Gloss White	WIND LOADING:	30 Kg / 66 lbs @ 100 mph

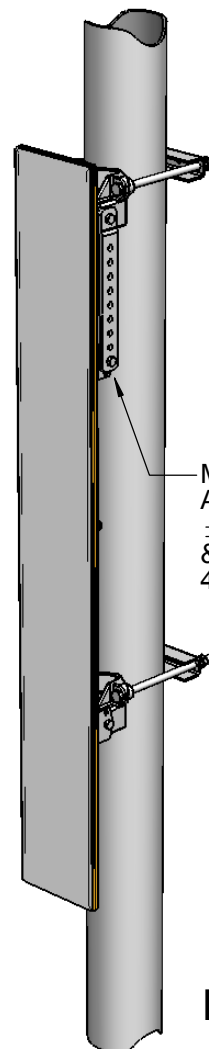
NOTE: PRODUCT D.C.
GROUNDED



SIDE VIEW



REAR VIEW



MOUNTING KIT (INCLUDED)
ADJUSTABLE TO
±13° IN ELEVATION
& SUITS POLE SIZES
40mm (1.6") TO 120mm (4.7")

**PICTORIAL
VIEW**

DIMENSIONS: mm (inches)
GA: 0555 - 10 Issued: 130407

EUROPEAN ANTENNAS LTD.

Tel: +44 (0)1638 731888
Fax: +44 (0)1638 731999

LAMBDA HOUSE, CHEVELEY
NEWMARKET, SUFFOLK, CB8 9RG,
UNITED KINGDOM

E-Mail: sales@european-antennas.co.uk
Website: www.european-antennas.co.uk

European Antennas Ltd. has a policy of continuous development and therefore stress that the data contained on this sheet should be used for guidance only.