



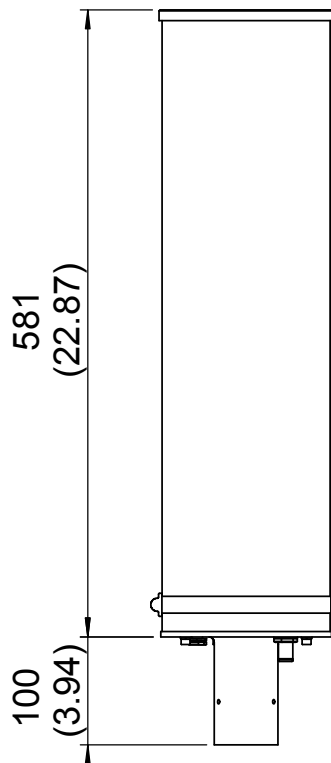
EUROPEAN ANTENNAS

Excellence through design
Creative in concept

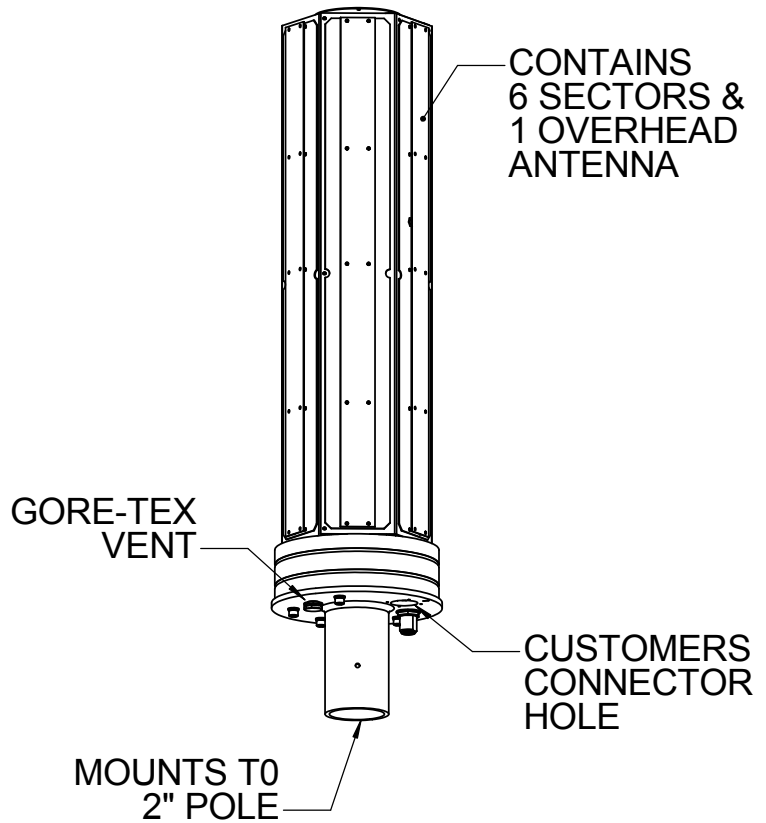
MULTI SECTOR ANTENNA

MODEL: MSA7-16-35R/497

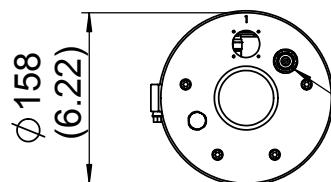
FREQUENCY:	3.4 - 3.5 GHz	GAIN:	15 dBiC (Sectors) 7dBiC (Overhead)
POLARISATION:	R.H. Circular	BEAMWIDTH:	70°x10° (Sectors) 70°x60° (Overhead)
AXIAL RATIO:	3 dB Typical	VSWR:	1.5 : 1
POWER RATING:	20W Per Antenna	FRONT TO BACK:	20 dB on azimuth sectors
TEMPERATURE:	-20°C to +50°C	MASS:	4.0Kg / 8.8lbs
RADOME:	Glass Fibre / Gloss White	WIND LOADING:	14.9Kg / 32.8lbs @ 100mph



SIDE VIEW



**PICTORIAL VIEW
(RADOME REMOVED)**



END VIEW

DIMENSIONS: mm (inches)
GA: 497-4 Issued: 040105

EUROPEAN ANTENNAS LTD.

Tel: +44 (0)1638 731888
Fax: +44 (0)1638 731999

LAMBDA HOUSE, CHEVELEY
NEWMARKET, SUFFOLK, CB8 9RG,
UNITED KINGDOM

E-Mail: sales@european-antennas.co.uk
Website: www.european-antennas.co.uk