



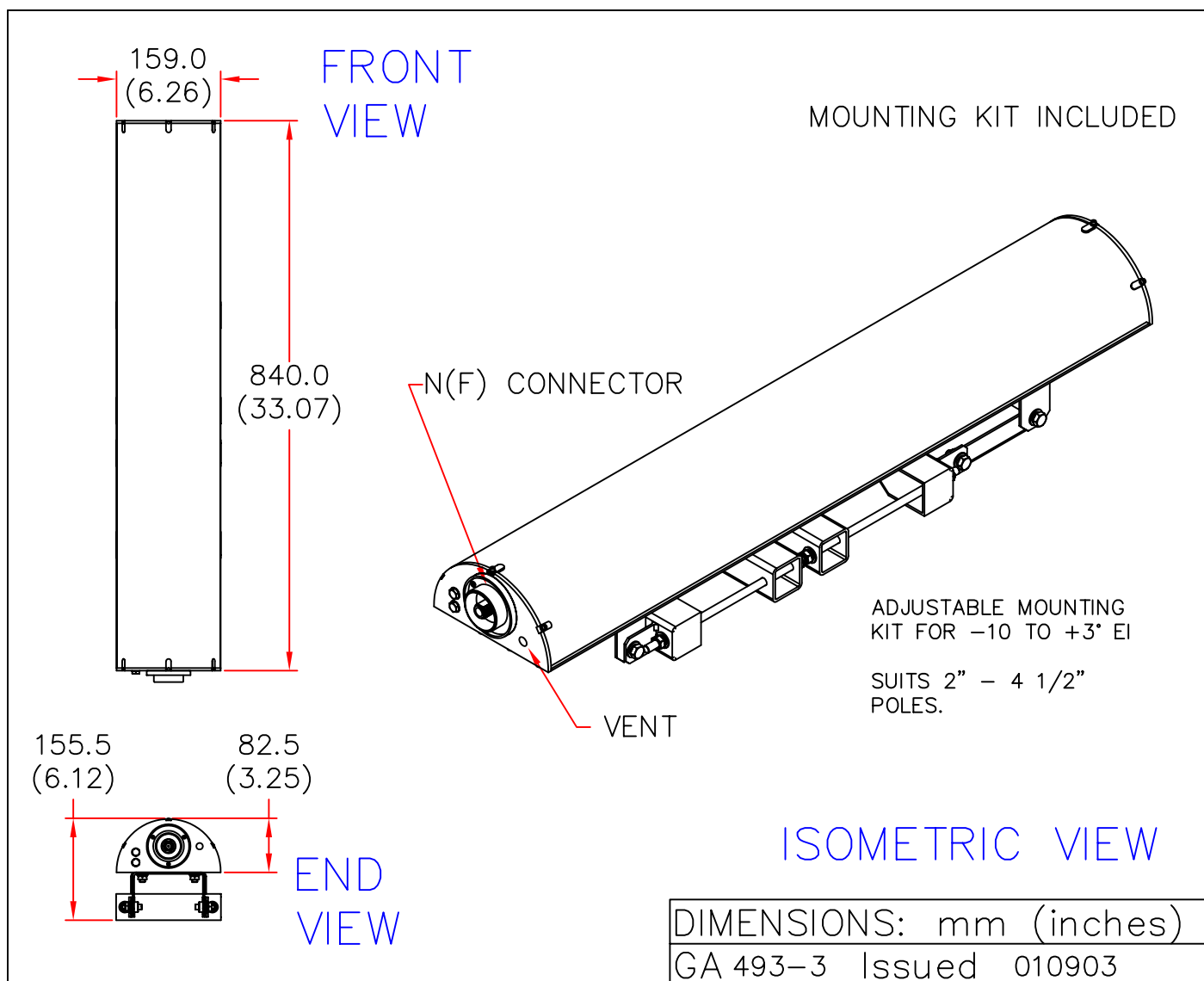
EUROPEAN ANTENNAS



BASE STATION SECTOR ANTENNA

MODEL: SA13-180V-35B-D2/493

FREQUENCY: 3.40 – 3.60 GHz	GAIN: 13dBi Peak, >11dBi over 180°
POLARISATION: Linear (Vertical)	BEAMWIDTH: 180° x 7°
CROSS POLAR: -25dB Typical	VSWR: 1.5 : 1 Max
POWER RATING: 20 Watts	FRONT TO BACK: 20dB
TEMPERATURE: -40°C to +60°C	MASS: 7Kg/15.4lbs (Inc mtg kit)
RADOME: Gloss Grey Glass Fibre	WIND LOADING: 21.66Kg/47.66lbs @ 100mph
VRP: First Null Fill & Sidelobe Suppression	ELECTRICAL DOWN TILT: 2°



EUROPEAN ANTENNAS LTD.

TEL: +44 (0)1638 731888

LAMBDA HOUSE, CHEVELEY,
NEWMARKET, SUFFOLK, CB8 9RG,
UNITED KINGDOM.

FAX: +44 (0)1638 731999

European Antennas Ltd. has a policy of continuous development and therefore stress that the data contained on this sheet should be used for guidance only.