



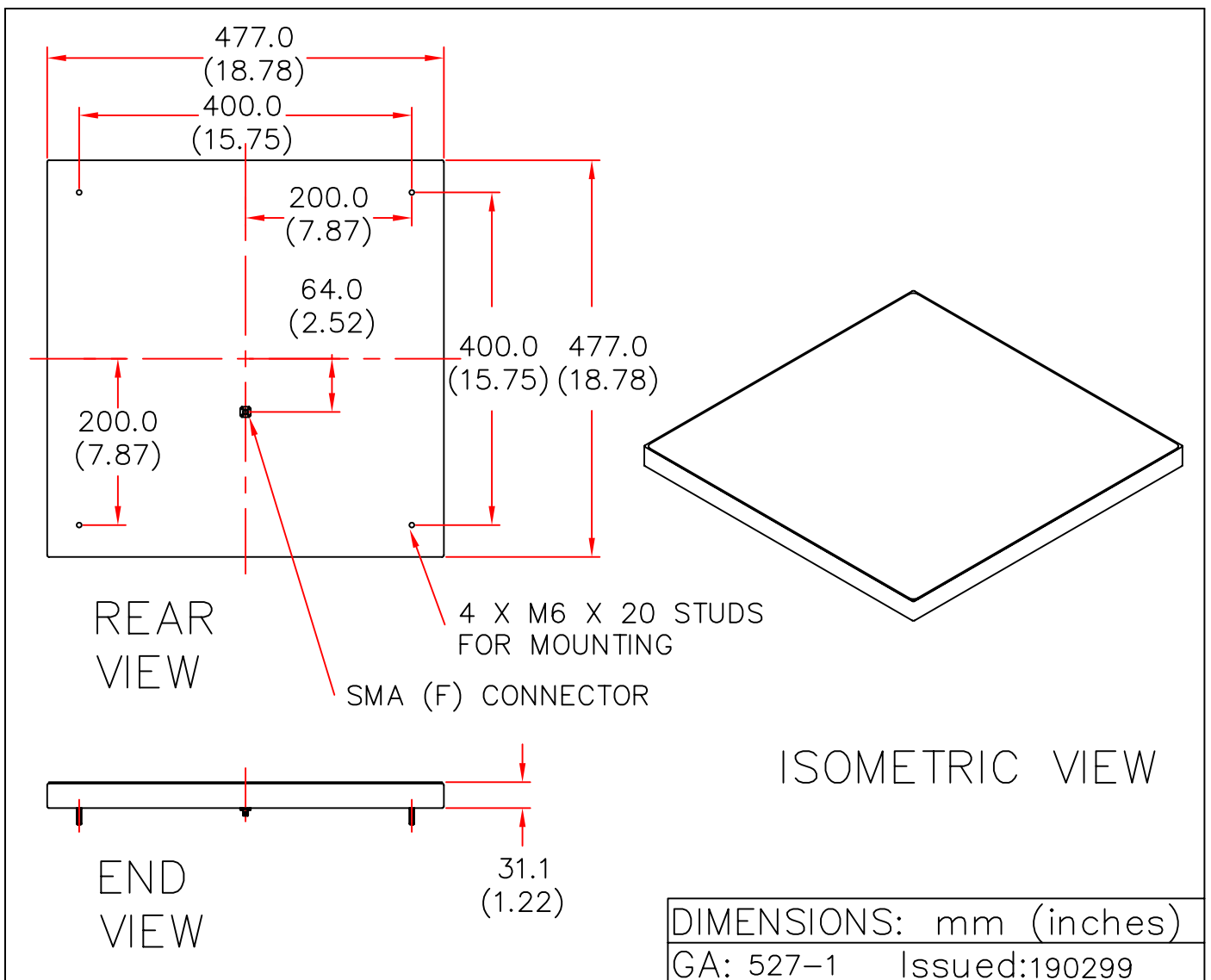
EUROPEAN ANTENNAS



LOW PROFILE ANTENNA

MODEL: LPA7-450R/527

FREQUENCY: 445 - 455MHz	GAIN: 7dBiC
POLARISATION: R H Circular	BEAMWIDTH: 70° x 70°
AXIAL RATIO: 5dB Typical	VSWR: 2:1 Max
POWER RATING: 10W	FRONT TO BACK: 20dB Typical
TEMPERATURE: -20°C to +50°C	MASS: 1.8Kg/4.0lbs
RADOME: Glass fibre/Gloss white	WIND LOADING: 81.19 lbs/36.9Kg @ 100 mph



EUROPEAN ANTENNAS LTD.

TEL: +44 (0)1638 731888

LAMBDA HOUSE, CHEVELEY,
NEWMARKET, SUFFOLK, CB8 9RG,
UNITED KINGDOM.

FAX: +44 (0)1638 731999

European Antennas Ltd. has a policy of continuous development and therefore stress that the data contained on this sheet should be used for guidance only.