

RC010-2350/233

COBHAM

Omni Antenna

The most important thing we build is trust

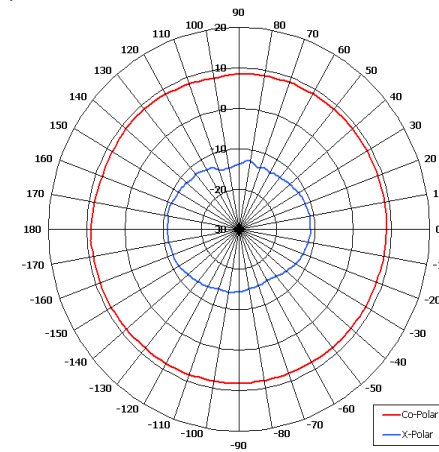
Designed for WiMax/LTE Applications

Suitable for Multiple Applications

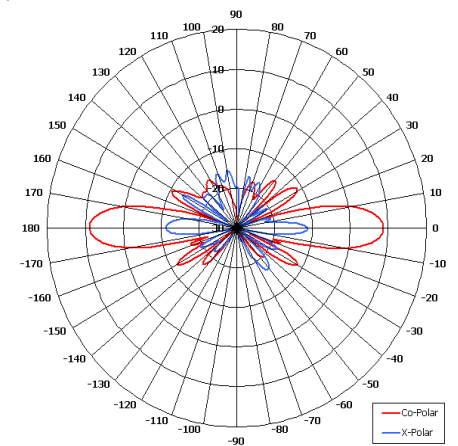
Right Hand Circular Polarised

High Gain

Rugged

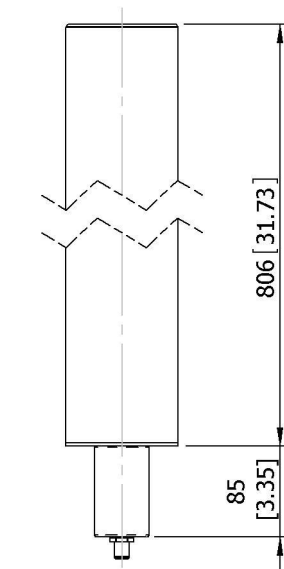


Azimuth Pattern

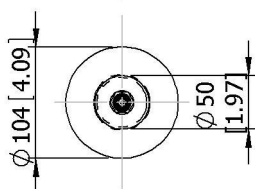


Elevation Pattern

SIDE VIEW



BASE VIEW



GA: 0233

MOUNTED VIA
Ø 50 (1.97) SPIGOT

N(F)
CONNECTOR

ELECTRICAL

Frequency	2.30 - 2.40 GHz
Gain	8 dBiC Nom
Polarisation	Right Hand Circular
Beamwidth	360° (Az) x 12° (El) Approx
Axial Ratio	3 dB Typ
VSWR	1.5:1 Max
Power Rating	50 W
Front to Back	N/A

MECHANICAL

Standard Finish	Gloss White
Mass	1.7 Kg (0.78 lbs)
Temperature	-20° to +50°C
Wind Loading	14.2 Kg (31.2 lbs) @ 100mph

MOUNTING OPTIONS

Kits Available	MK2/A
See separate data sheets	

ADDITIONAL NOTES

Issued 231210

European Antennas Limited trading as Cobham Antenna Systems, Microwave Antennas

European Antennas Limited has a policy of continuous development and stress that the information provided is a guide only and does not constitute an offer or contract or part thereof. Whilst every effort is made to ensure the accuracy of the information contained in this brochure, no responsibility can be accepted for any errors or omissions.

The copyright of antenna designs and images is copyright protected and owned by European Antennas Limited.
©European Antennas Limited

For further information please contact:

Cobham Antenna Systems, Microwave Antennas
Lambda House, Cheveley,
Newmarket, Suffolk CB8 9RG, UK.
Tel +44 (0)1638 732 177
Fax +44 (0) 1638 731999
Email newmarket.sales@cobham.com