



# EUROPEAN ANTENNAS

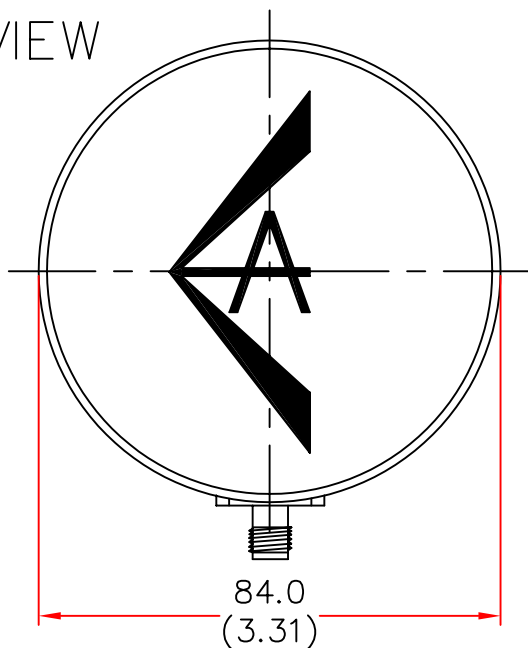


## LOW PROFILE ANTENNA

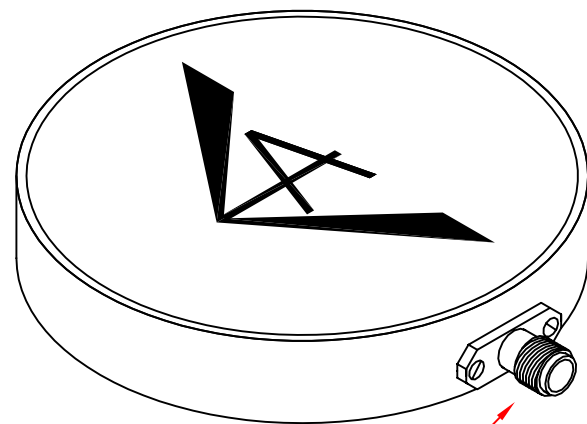
MODEL: LPA7-25R/022

FREQUENCY: 2.30 – 2.70 GHz	GAIN: 7 dBiC
POLARISATION: R.H. Circular	BEAMWIDTH: 80° x 80°
AXIAL RATIO: 2 dB	VSWR: 1.5 : 1
POWER RATING: 10 W	FRONT TO BACK: 20 dB
TEMPERATURE: -20°C to +50°C	MASS: 150 g/5.3 oz
RADOME: Glass Fibre/Matt Black	WIND LOADING: 0.9Kg/2.0lbs @100mph

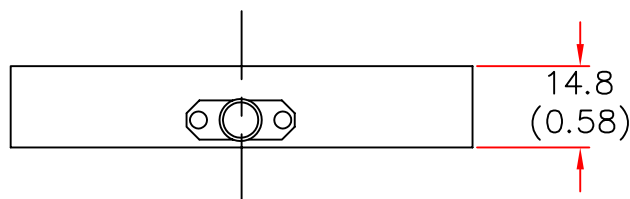
PLAN VIEW



ISOMETRIC VIEW



SIDE VIEW



SMA(F) CONNECTOR

DIMENSIONS: mm (inches)  
GA 022B - 1 ISSUE 060197

EUROPEAN ANTENNAS LTD.

TEL: +44 (0)1638 731888

LAMBDA HOUSE, CHEVELEY,  
NEWMARKET, SUFFOLK, CB8 9RG,  
UNITED KINGDOM.

FAX: +44 (0)1638 731999

European Antennas Ltd. has a policy of continuous development and therefore stress that the data contained on this sheet should be used for guidance only.