

# MSA5-1.4V/2309

## Multi Sector Antenna



The most important thing we build is trust

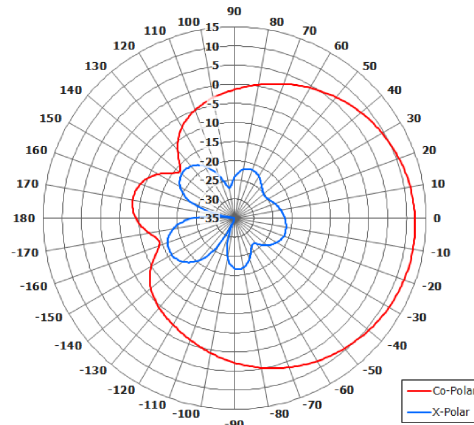
### Key Features

Designed for Air to Ground Telemetry Link

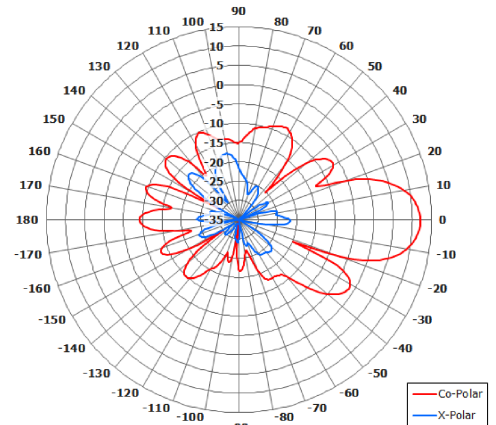
Suitable for Security Applications

Azimuth Coverage - 4 Sectors

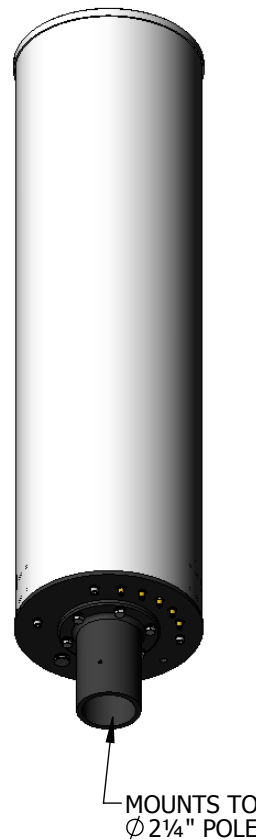
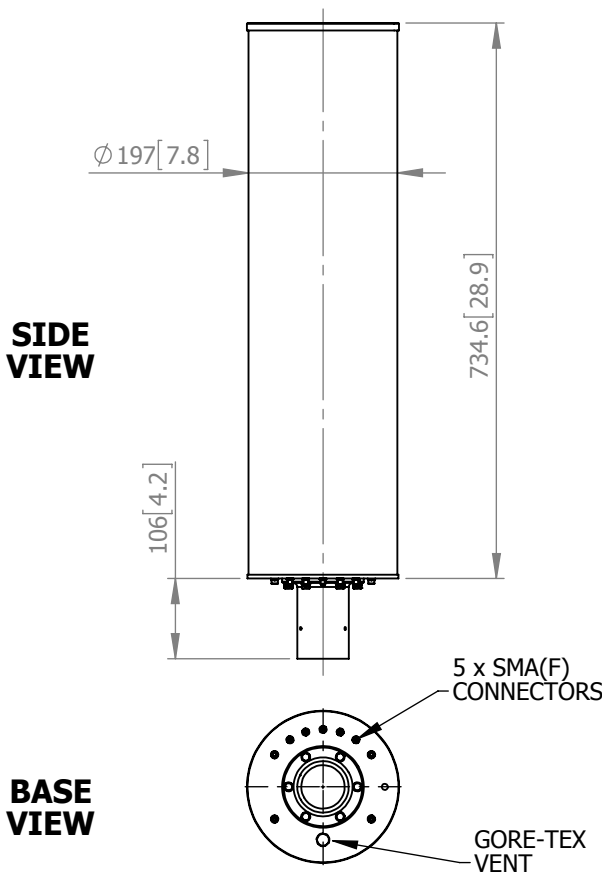
Overhead Coverage - RHC Element



Azimuth Polar Plot



Elevation Polar Plot



### ELECTRICAL

Frequency:	1.315 - 1.430 GHz
Gain:	11.7 dBi Typ. (Sectors) 6.5 dBiC Typ. (O'head)
Polarisation:	Linear Vertical (Sectors) Right Hand Circular (Overhead)
Beamwidth:	88° (Az) x 19° (El) Approx. (Sectors) 57° (Az) x 56° (El) Approx. (Overhead)
Cross Polar:	20 dB Typ. (Sectors)
Axial Ratio:	4 dB Typ. (Overhead)
VSWR:	1.67:1 Max, <1.5:1 Typ. (Sectors) 1.5:1. (Overhead)
Power Rating:	100 W

### MECHANICAL

Standard Finish:	White Radome, Black Spigot
Mass:	5.1 Kg (11.2 lbs)
Temperature:	-50° to +71°C
Wind Loading:	23 Kg (50 lbs) @ 100 mph

### MOUNTING OPTIONS

Kits Available:	N/A
See Separate Data Sheets	

GA:	2309B	Issued:	140116
Dimensions:	mm [inches]		L

European Antennas Limited trading as Cobham Antenna Systems, Microwave Antennas

European Antennas Limited has a policy of continuous development and stress that the information provided is a guide only and does not constitute an offer or contract or part thereof. Whilst every effort is made to ensure the accuracy of the information contained in this Data Sheet, no responsibility can be accepted for any errors or omissions.

The copyright of antenna designs and images is copyright protected and owned by European Antennas Limited.  
©European Antennas Limited.

For further information please contact:

Cobham Antenna Systems, Microwave Antennas, Lambda House, Cheveley, Newmarket, Suffolk, CB8 9RG, UK

T: +44 (0) 1638 732177  
E: [newmarket.sales@cobham.com](mailto:newmarket.sales@cobham.com)  
W: [www.cobham.com/antennasystems/microwaveantennas](http://www.cobham.com/antennasystems/microwaveantennas)