

Flat Panel Antenna

The most important thing we build is trust

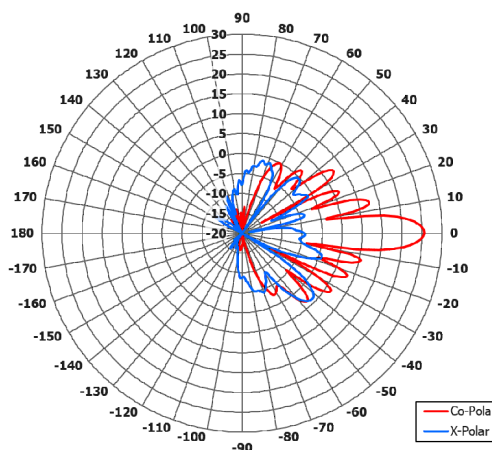
Key Features

Designed for RADAR applications

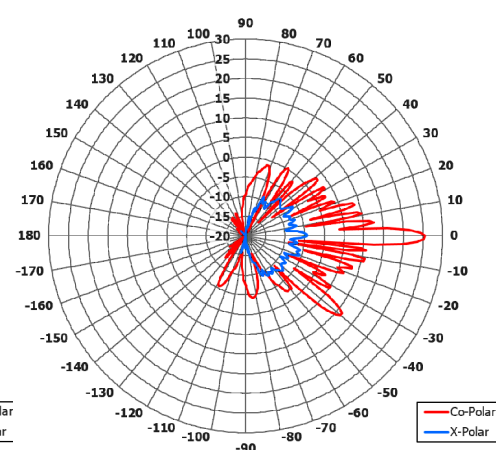
High Gain

Wide Band

Pattern Highly Directional

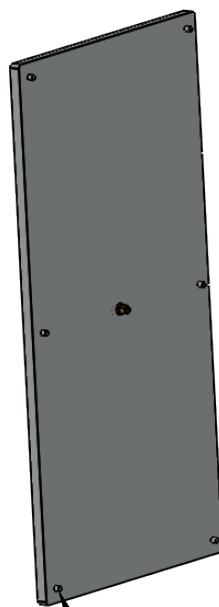
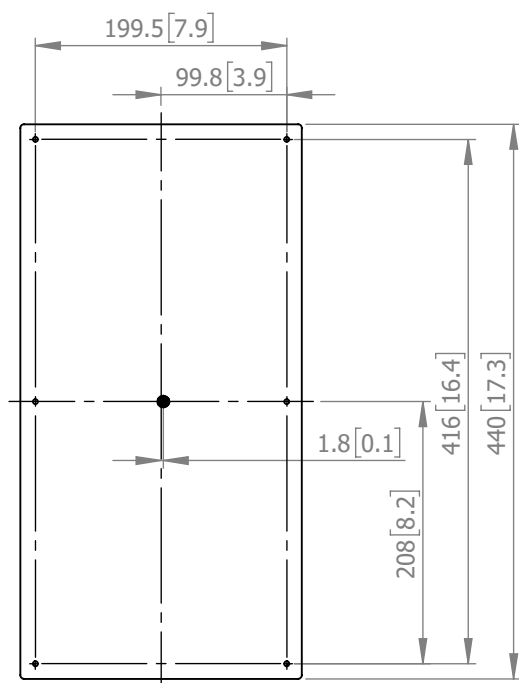


Typical Azimuth Polar Plot

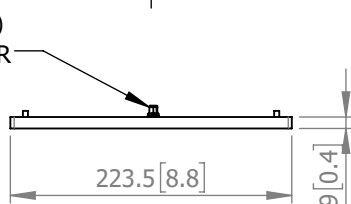


Typical Elevation Polar Plot

REAR VIEW



END VIEW



MOUNTED VIA
6 OFF M4 x 5 STUDS

ELECTRICAL

| | |
|-------------------------|------------------------|
| Frequency: | 8.3 - 9.7 GHz |
| Gain: | 25.5 dBi Typ. |
| Polarisation: | Linear (Vertical) |
| Beamwidth: | 9° (Az) x 4° (El) Typ. |
| Cross Polar: | 20 dB Typ. |
| VSWR: | 2:1 Max. |
| Power Rating: | 10 W |
| Front to Back: | >40dB |
| Electrical Tilt: | N/A |

MECHANICAL

| | |
|-------------------------|-----------------------|
| Standard Finish: | Full Matt Grey Smooth |
| Mass: | 1.0 Kg / 2.2 lbs |
| Temperature: | -20° to +50°C |
| Wind Loading: | 144N @ 100 mph |

MOUNTING OPTIONS

| | |
|---------------------------------|-----|
| Kits Available: | N/A |
| See Separate Data Sheets | |

DS: 2505-1 Issued: 010719
Dimensions: mm [inches] L

Chelton Limited trading as Cobham Antenna Systems, Microwave Antennas

Chelton Limited has a policy of continuous development and stress that the information provided is a guide only and does not constitute an offer or contract or part thereof. Whilst every effort is made to ensure the accuracy of the information contained in this Data Sheet, no responsibility can be accepted for any errors or omissions.

The copyright of antenna designs and images is copyright protected and owned by Chelton Limited.
©Chelton Limited.

For further information please contact:

Cobham Antenna Systems, Microwave Antennas, Lambda House, Cheveley, Newmarket, Suffolk, CB8 9RG, UK

T: +44 (0) 1638 732177
E: newmarket.sales@cobham.com
W: www.cobham.com/antennasystems/microwaveantennas