

MSA5-1.4V/2309

Multi Sector Antenna



The most important thing we build is trust

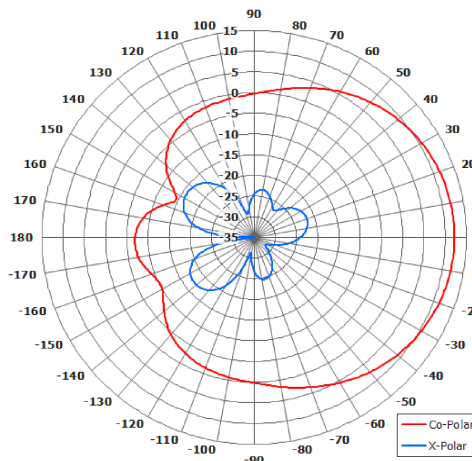
Key Features

Designed for Air to Ground Telemetry Link

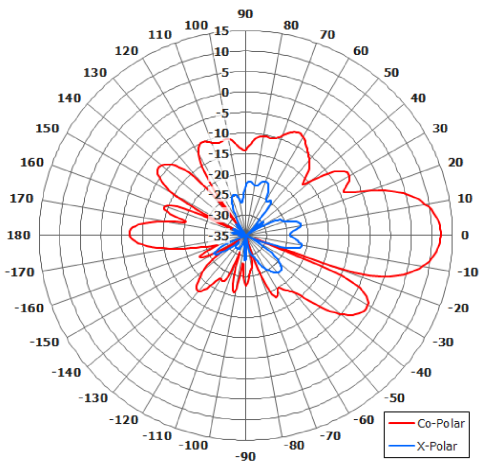
Suitable for Security Applications

Azimuth Coverage - 4 Sectors

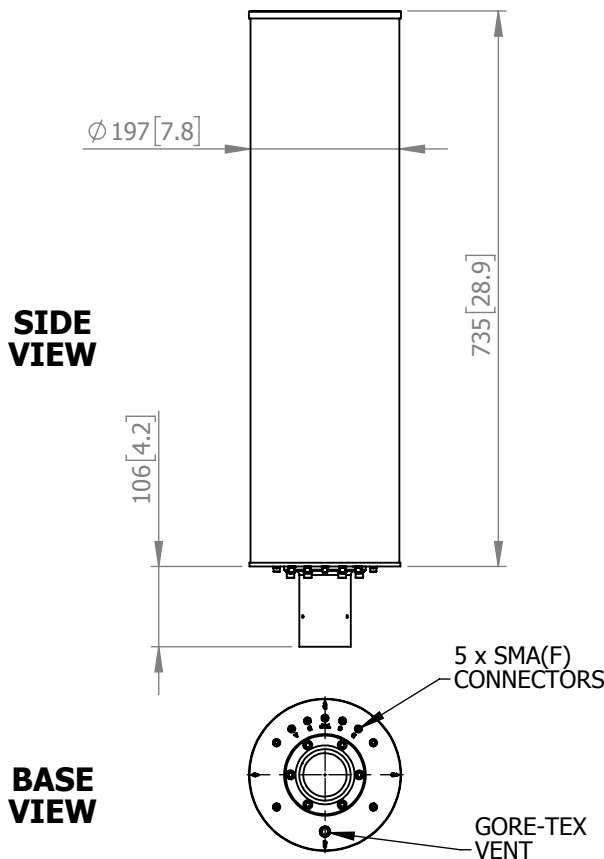
Overhead Coverage - RHC Element



Azimuth Polar Plot (Typical Sector)



Elevation Polar Plot (Typical Sector)



ELECTRICAL

Frequency:	1.315 - 1.430 GHz
Gain:	12.0 dBi (Sectors) 6.4 dBiC (Overhead)
Polarisation:	Linear Vertical (Sectors) Right Hand Circular (Overhead)
Beamwidth:	80° (Az) x 20° (El) (Sectors) 65° (Az) x 65° (El) Approx. (Overhead)
Cross Polar:	>20 dB Typ. (Sectors)
Axial Ratio:	3 dB Typ. (Overhead)
VSWR:	<1.5:1 Typ, 1.67:1 Max (Sectors) <1.5:1. (Overhead)
Power Rating:	50 W

MECHANICAL

Standard Finish:	White Radome, Black Spigot
Mass:	5.0 Kg (11.0 lbs)
Temperature:	-50° to +50°C
Wind Loading:	209 N @ 100 mph

MOUNTING OPTIONS

Kits Available:	N/A
See Separate Data Sheets	

GA:	230911	Issued:	260319
Dimensions:	mm [inches]		L

Chelton Limited trading as Cobham Antenna Systems, Microwave Antennas

Chelton Limited has a policy of continuous development and stress that the information provided is a guide only and does not constitute an offer or contract or part thereof. Whilst every effort is made to ensure the accuracy of the information contained in this Data Sheet, no responsibility can be accepted for any errors or omissions.

The copyright of antenna designs and images is copyright protected and owned by Chelton Limited.
©Chelton Limited.

For further information please contact:

Cobham Antenna Systems, Microwave Antennas, Lambda House, Cheveley, Newmarket, Suffolk, CB8 9RG, UK

T: +44 (0) 1638 732177
E: newmarket.sales@cobham.com
W: www.cobham.com/antennasystems/microwaveantennas