

Omni Antenna

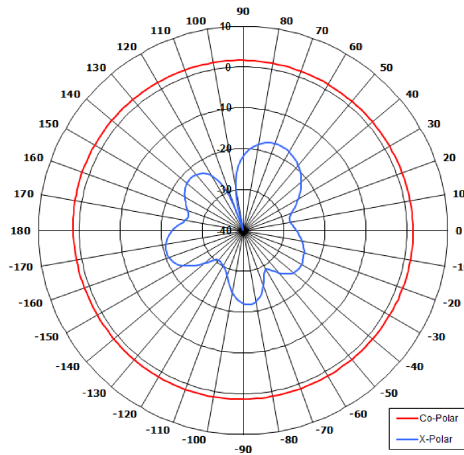
The most important thing we build is trust

Key Features

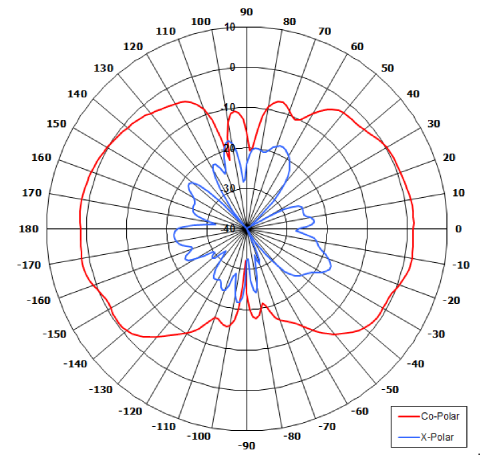
Designed for Security Applications

High Power

Rugged

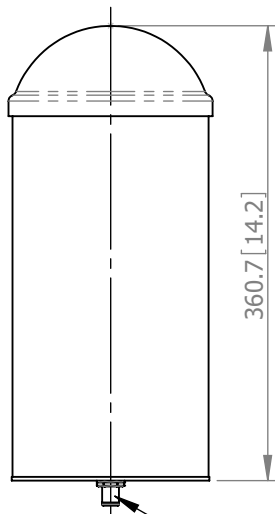


Azimuth Polar Plot

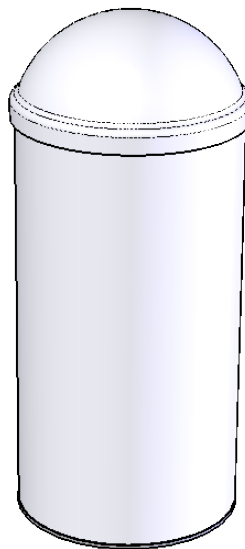


Elevation Polar Plot

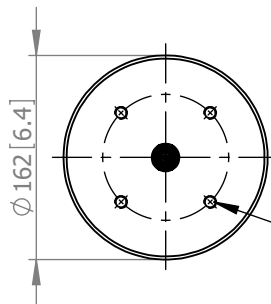
SIDE VIEW



N(F)
CONNECTOR



BASE VIEW



MOUNT VIA 4 OFF
M10 x 15 DEEP HOLES,
EQUI-SPACED ON
100 PCD.

Frequency:	0.30 - 10.00 GHz
Gain:	2 dBi Typ. on Horizon
Polarisation:	Linear (Vertical)
Beamwidth:	360° (Az) x 65° (El) Approx.
Cross Polar:	20 dB Typ.
VSWR:	8:1 - 0.30-0.35 GHz 3.5:1 - 0.35-1.00 GHz 2.5:1 - 1.00-10.00 GHz
Power Rating:	100W
Front to Back:	N/A

MECHANICAL

Standard Finish:	White Radome
Mass:	1.65 Kg / 3.63 lbs
Temperature:	-40° to +55°C
Wind Loading:	8.3 Kg / 18.3 lbs @ 100 mph

MOUNTING OPTIONS

Kits Available: N/A

See Separate Data Sheets

DS: 1381-5 **Issued:** 050118
Dimensions: mm [inches] **M**

Chelton Limited trading as Cobham Antenna Systems, Microwave Antennas

Chelton Limited has a policy of continuous development and stress that the information provided is a guide only and does not constitute an offer or contract or part thereof. Whilst every effort is made to ensure the accuracy of the information contained in this Data Sheet, no responsibility can be accepted for any errors or omissions.

The copyright of antenna designs and images is copyright protected and owned by Chelton Limited.
©Chelton Limited.

For further information please contact:

Cobham Antenna Systems, Microwave Antennas, Lambda House, Cheveley, Newmarket, Suffolk, CB8 9RG, UK

T: +44 (0) 1638 732177
E: newmarket.sales@cobham.com
W: www.cobham.com/antennasystems/microwaveantennas