

LPA7-51V/322



Directional Antenna

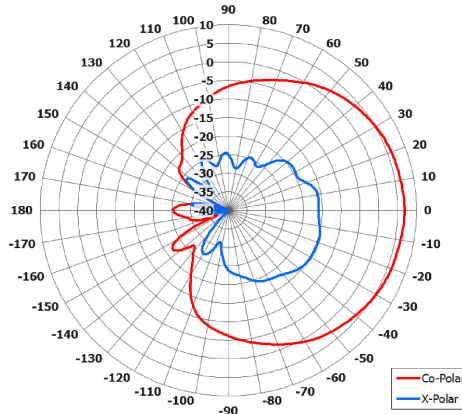
The most important thing we build is trust

Key Features:

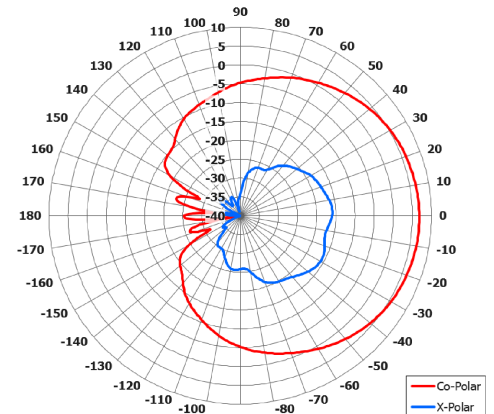
Rugged for multiple applications

Low profile directional antenna

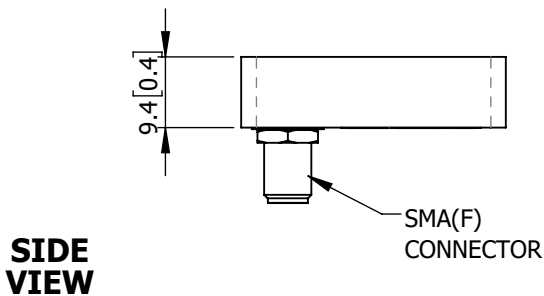
Machined aluminium housing



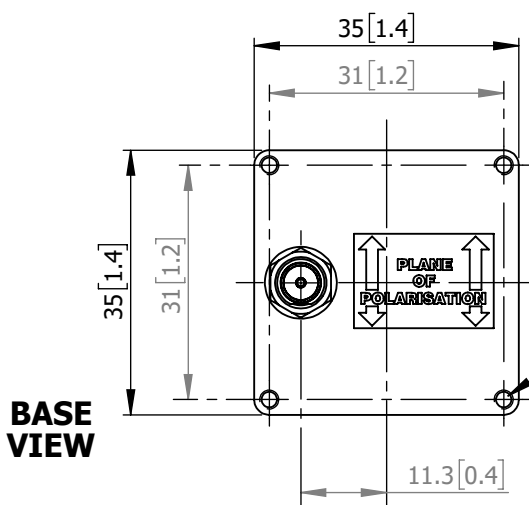
Azimuth Polar Plot



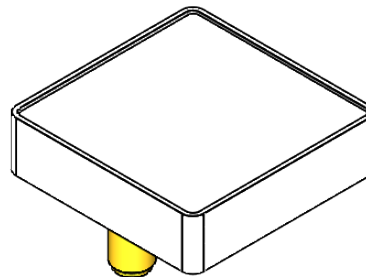
Elevation Polar Plot



SIDE VIEW



BASE VIEW



MOUNTED VIA
4 OFF M2.5 x 5
TAPPED HOLES

ELECTRICAL

Frequency:	4.8 to 5.4 GHz
Gain:	6.5 dBi Typ.
Polarisation:	Vertical
Beamwidth:	85° (Az) x 85° (El) Typ.
Cross Polar	<20 dB Typ.
VSWR:	<1.5:1
Power Rating:	5 W

MECHANICAL

Standard Finish:	White
Mass:	16 g / 0.56 oz
Temperature:	-20 to +50°C
Wind Loading:	N/A

MOUNTING OPTIONS

Kits Available:	N/A
-----------------	-----

See Separate Data Sheets

DS: 0322-3 Issued: 091220
Dimensions: mm [inches]

Chelton Limited trading as Cobham Antenna Systems, Microwave Antennas

Chelton Limited has a policy of continuous development and stress that the information provided is a guide only and does not constitute an offer or contract or part thereof. Whilst every effort is made to ensure the accuracy of the information contained in this Data Sheet, no responsibility can be accepted for any errors or omissions.

The copyright of antenna designs and images is copyright protected and owned by Chelton Limited.
©Chelton Limited.

For further information please contact:

Cobham Antenna Systems, Microwave Antennas, Lambda House, Cheveley, Newmarket, Suffolk, CB8 9RG, UK

T: +44 (0) 1638 732177
E: newmarket.sales@cobham.com
W: www.cobham.com/antennasystems/microwaveantennas