

# SBA-0.44V/2485

Omni Antenna



## Key Features

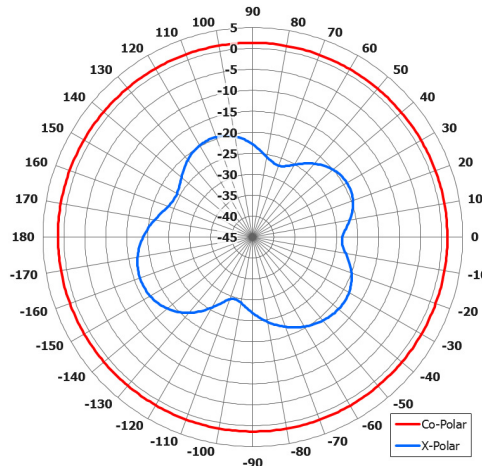
Designed for unmanned systems applications

Suitable for security applications

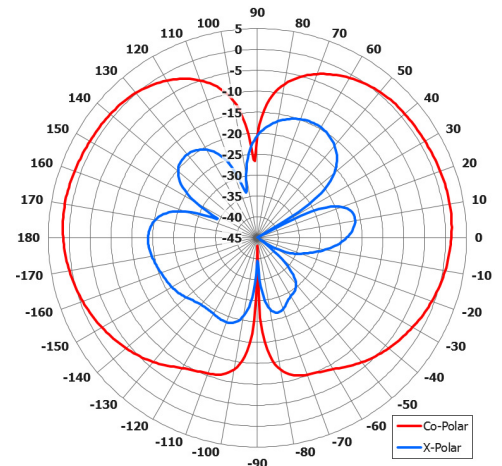
Low profile design

Lightweight

Low windloading

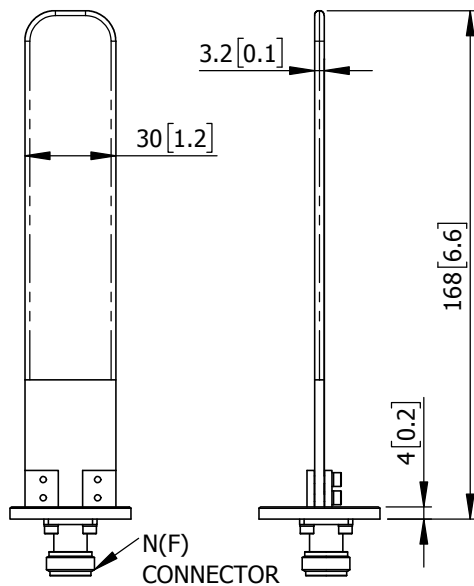


Azimuth Polar Plot

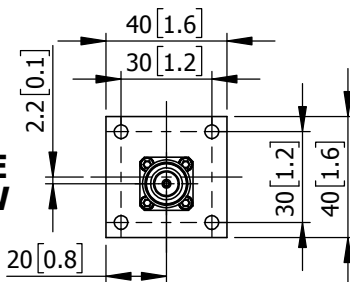


Elevation Polar Plot

**SIDE VIEW**



**BASE VIEW**



MOUNTED VIA 4 OFF  
Ø 4.5 HOLES

## ELECTRICAL

Frequency:	430 - 450 MHz
Gain:	2.4 dBi Nom.
Polarisation:	Linear (Vertical)
Beamwidth:	360° (Az) x 84° (El)
Cross Polar:	>20 dB Typ.
VSWR:	2.5:1 Max, 2:1 Typ.
Power Rating:	20 W
Front to Back:	N/A
Electrical Tilt:	N/A

## MECHANICAL

Standard Finish:	Black
Mass:	71 g / 2.5 oz
Temperature:	-20° to +50°C
Wind Loading:	830 g / 1.83 lbs @ 100 mph

## MOUNTING OPTIONS

Kits Available:	N/A
-----------------	-----

DS: 2485-1 Issued: 040918  
Dimensions: mm [inches] M

Chelton Limited has a policy of continuous development and stress that the information provided is a guide only and does not constitute an offer or contract or part thereof. Whilst every effort is made to ensure the accuracy of the information contained in this brochure, no responsibility can be accepted for any errors or omissions.

The copyright of antenna designs and images is copyright protected and owned by Chelton Limited.  
©Chelton Limited

For further information please contact:  
Chelton Limited,  
Lambda House, Cheveley,  
Newmarket, Suffolk CB8 9RG, UK.  
T: +44 (0)1638 732 177  
E: newmarket.sales@chelton.com  
W: www.chelton.com/microwave