

HDA-1.3V/1488

Body Worn Antenna

Key Features:

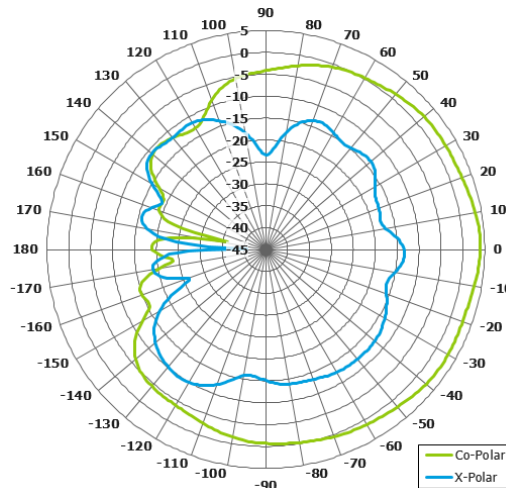
Designed for security applications

Suitable for Man-Pack applications

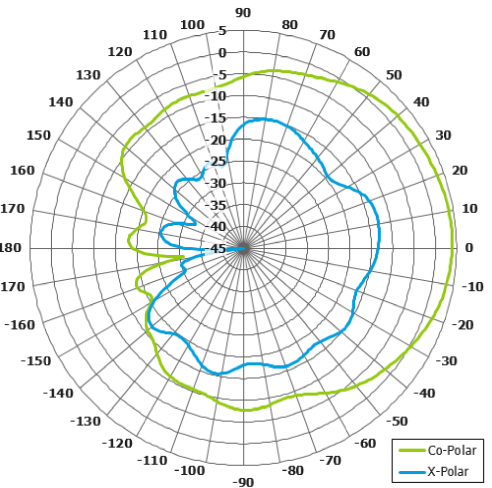
Pattern-sectional

High gain

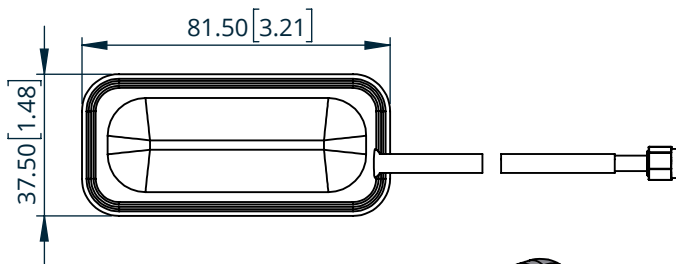
Lightweight



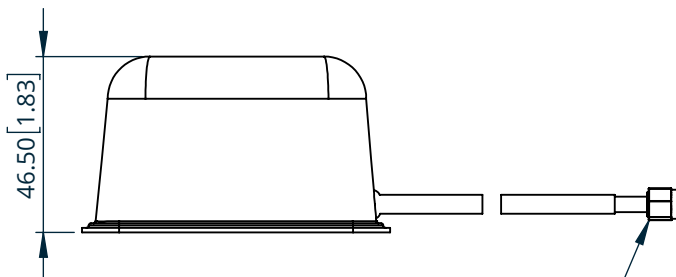
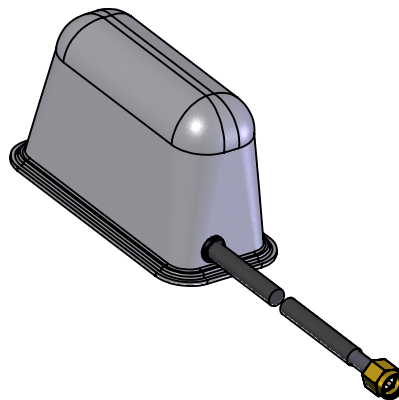
**Azimuth Polar Plot
(@ 1.35 GHz)**



**Elevation Polar Plot
(@ 1.35 GHz)**



**TOP
VIEW**



**SIDE
VIEW**

SMA(M) CONNECTOR
ON 250MM OF RG316

ELECTRICAL

Frequency: 1.26 to 1.40 GHz

Gain: 3.7 dBi Typ.

Polarisation: Vertical

Beamwidth: 124° x 78° Typ.

Cross Polar: >15 dB Typ.

VSWR: 2.6:1 Max, 2:1 Typ.

Power Rating: 10 W

MECHANICAL

Standard Finish: Grey

Mass: 30 g / 1.06 oz

Temperature: -20 to +50°C

Full radiation patterns and CAD available on request

DS: 1488-3

Issued: 010921

Dimensions: mm [inches]