

LCO10-3450/753

Omni Antenna

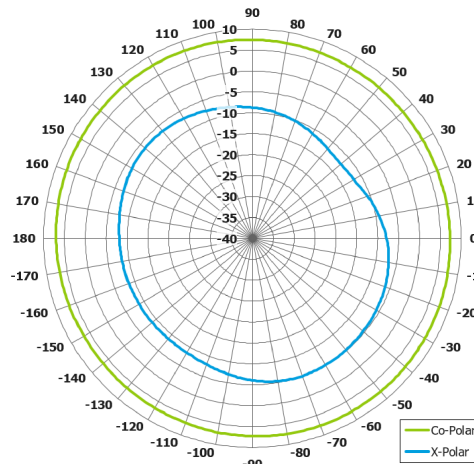
Key Features:

Design for datalink applications

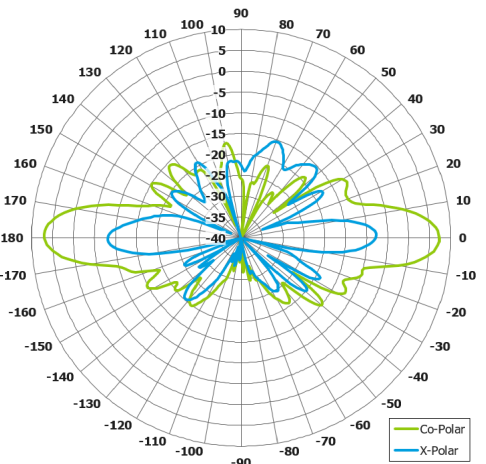
Left hand circular polarisation

High gain omni-directional

Rugged design

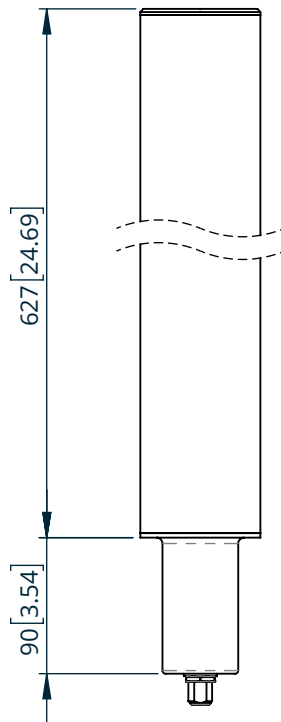


**Azimuth Polar Plot
(@ 3.45 GHz)**

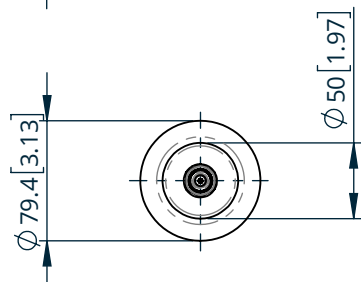


**Elevation Polar Plot
(@ 3.45 GHz)**

**SIDE
VIEW**



**BASE
VIEW**



ELECTRICAL

Frequency: 3.35 to 3.55 GHz

Gain (Peak): 7.5 dBiC Typ.

Gain (Average): 7.0 dBiC Typ.

Polarisation: Left hand circular

Beamwidth: 360° x 12.5°

Axial Ratio: 3.5 dB Typ.

VSWR: <1.5:1

Power Rating: 10 W

MECHANICAL

Standard Finish: White

Mass: 1.1 Kg / 2.4 lbs

Temperature: -20 to +50°C

Wind Loading: 85 N @ 100 mph

Full radiation patterns and CAD available on request

DS: 0753i2

Issued: 180521

Dimensions: mm [inches]