

# SA12-120-4.8V/1659

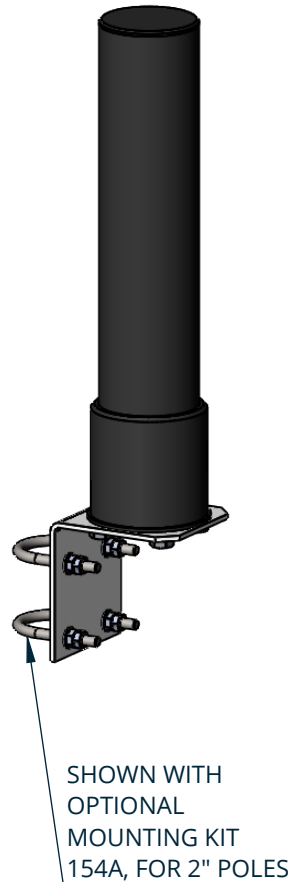
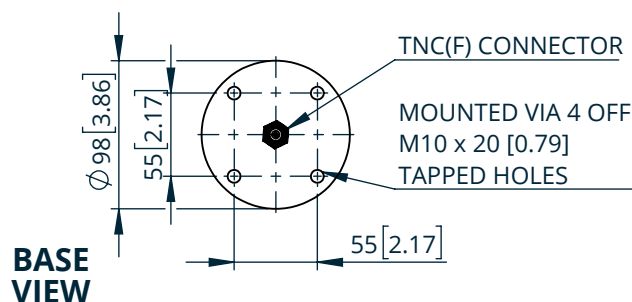
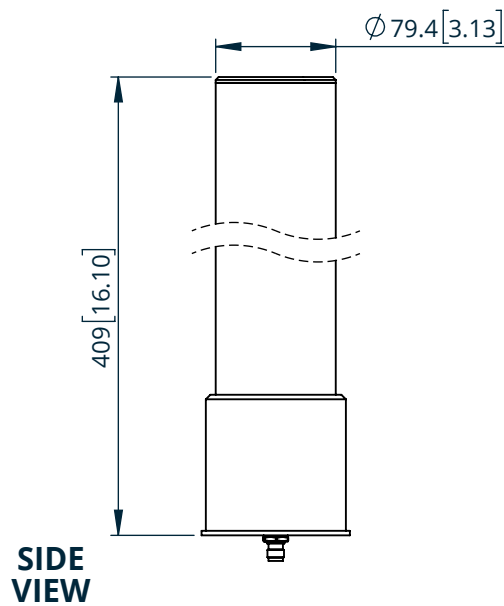
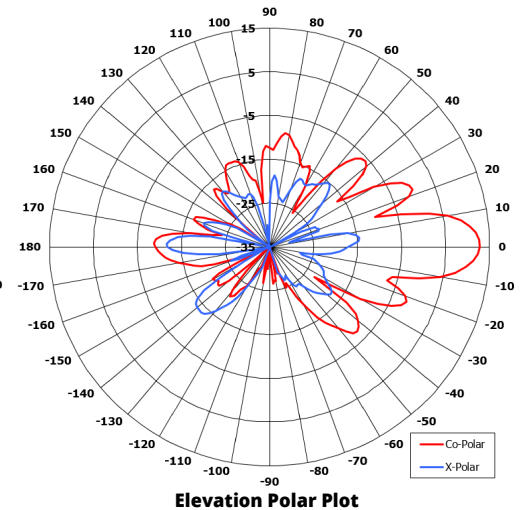
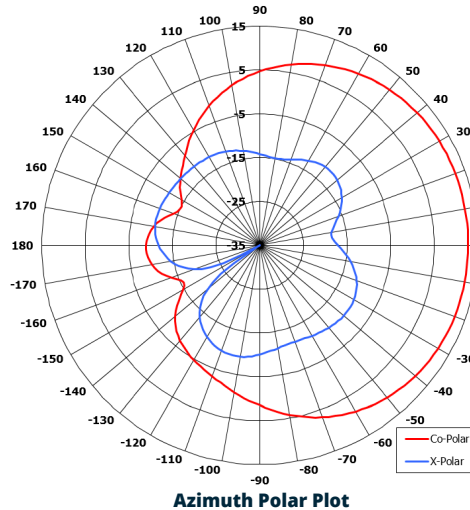
## Sector Antenna

### Key Features:

Suitable for multiple applications

Wideband sector

Rugged



### ELECTRICAL

<b>Frequency:</b>	4.4 to 5.1 GHz
<b>Gain:</b>	12.8 dBi Typ.
<b>Polarisation:</b>	Vertical
<b>Beamwidth:</b>	120° x 16° Typ.
<b>Cross Polar:</b>	>20 dB Typ.
<b>VSWR:</b>	1.5:1 Typ, 2:1 Max.
<b>Power Rating:</b>	30 W
<b>Front to Back:</b>	20 dB Typ.

### MECHANICAL

<b>Standard Finish:</b>	Black
<b>Mass:</b>	1.2 Kg / 2.64 lbs
<b>Temperature:</b>	-40 to +60°C
<b>Wind Loading:</b>	46 N @ 100 mph

### MOUNTING OPTIONS

**Kits Available:** 154A

See separate datasheet

Full radiation patterns and CAD available on request

**DS:** 1659-2

**Issued:** 070621

Dimensions: mm [inches]