

Key Features

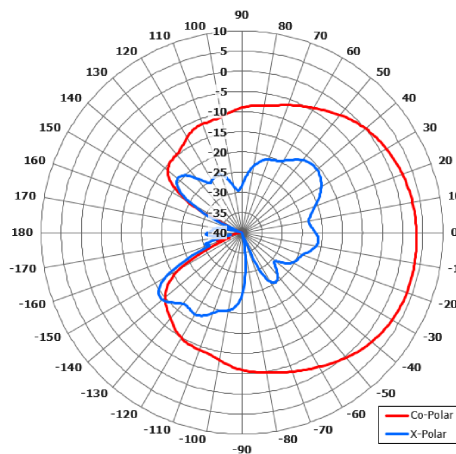
Designed for Electronic Warfare Applications

Designed for DF Arrays

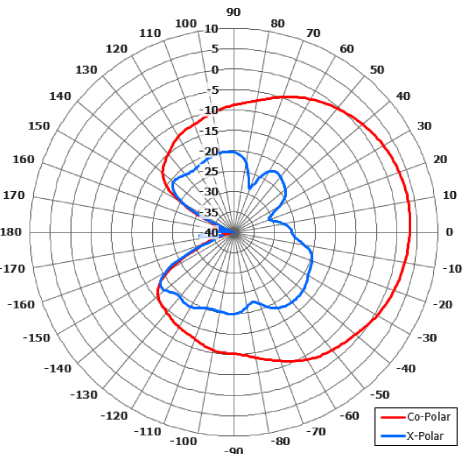
Pattern - Directional

Phase Matching Available

Amplitude Matching Available

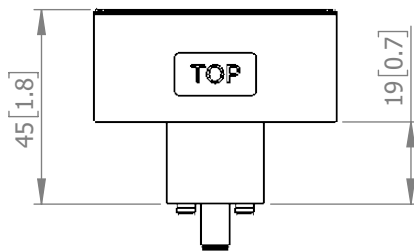


Azimuth Polar Plot



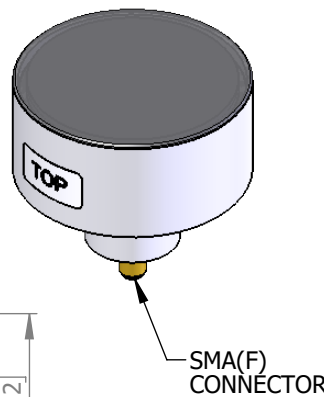
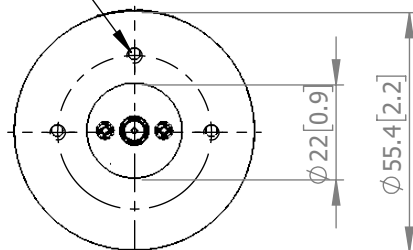
Elevation Polar Plot

TOP VIEW



BASE VIEW

3 x 6-32 UNC TAPPED HOLES x 0.2" DEEP SPACED AT 90° ON 1.4" PCD



ELECTRICAL

Frequency:	2.0 - 18.0 GHz
Gain:	0 dBiC Min, 3-18 GHz -2 dBiC Min, 2-3 GHz
Polarisation:	Left Hand Circular
Beamwidth:	75° (Az) x 75° (El) Approx.
Axial Ratio:	2 dB Max, 3-18 GHz 10 dB Max, 2-3 GHz
VSWR:	2.5:1
Power Rating:	5 W
Front to Back:	25 dB

MECHANICAL

Standard Finish:	Grey Radome
Mass:	70 g / 2.5 oz
Temperature:	-54° to +85°C
Wind Loading:	N/A

MOUNTING OPTIONS

Kits Available:	N/A
See Separate Data Sheets	

DS: 2015-2 Issued: 130820
Dimensions: mm [inches] L