

XPO2V-150-600/148

Omni Antenna



Key Features

Designed for DAS Applications

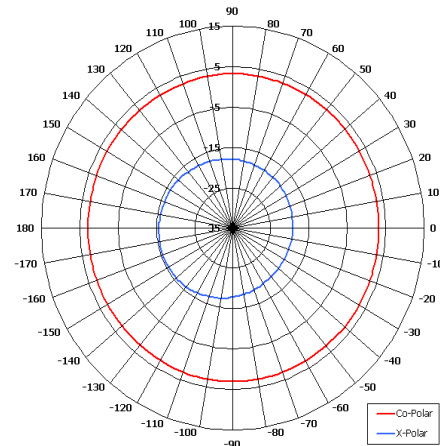
Wide Band

Suitable for PMR/TETRA

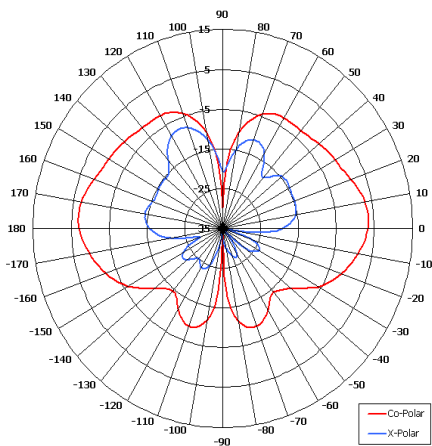
Applications

High Power

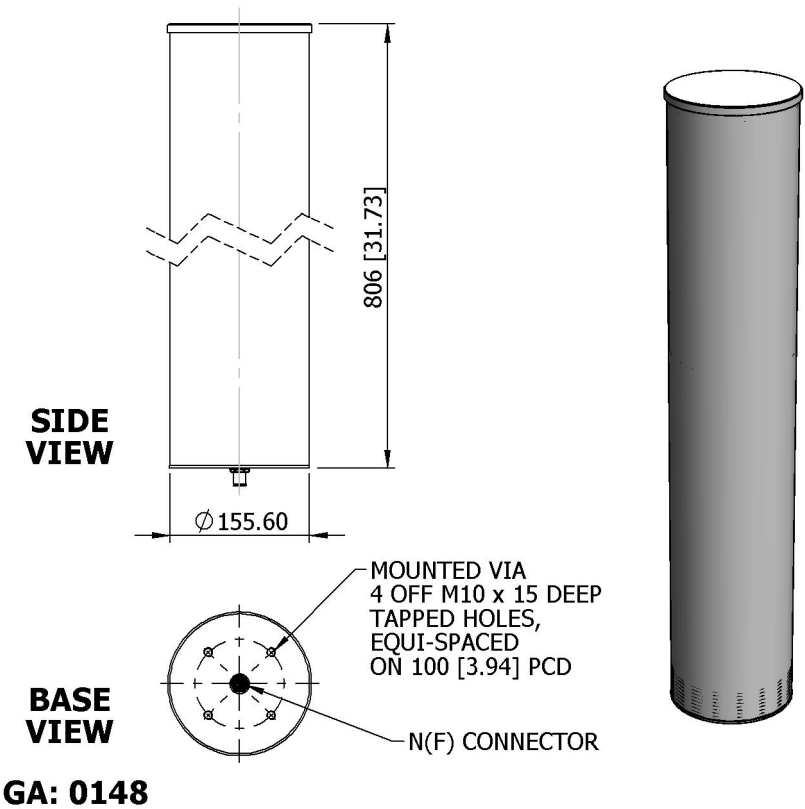
Low Azimuth Ripple



Azimuth Pattern



Elevation Pattern



GA: 0148

ELECTRICAL

Frequency	150 - 600 MHz
Gain	2 dBi Nom
Polarisation	Linear (Vertical)
Beamwidth	360° (Az) x 80° (El) Approx
VSWR	2.5:1 Max, 2:1 Typ
Power Rating	250 W

MECHANICAL

Standard Finish	Semi Spatter White
Mass	4.2 Kg (9.24 lbs)
Temperature	-20° to +50°C
Wind Loading	20.3 Kg (44.6 lbs) @ 100mph

MOUNTING OPTIONS

Kits Available	N/A
See separate data sheets	

ADDITIONAL NOTES

Issued 060510