

MHA3-406R-S1/979

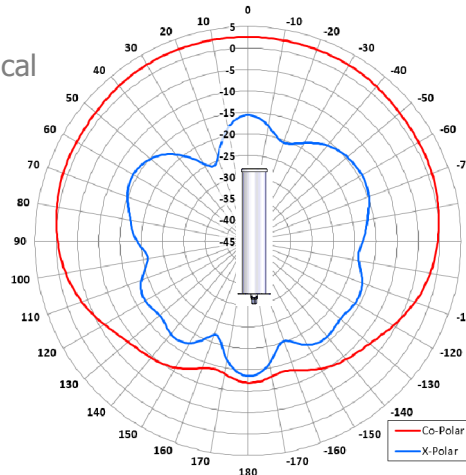
Hemi Omni Antenna



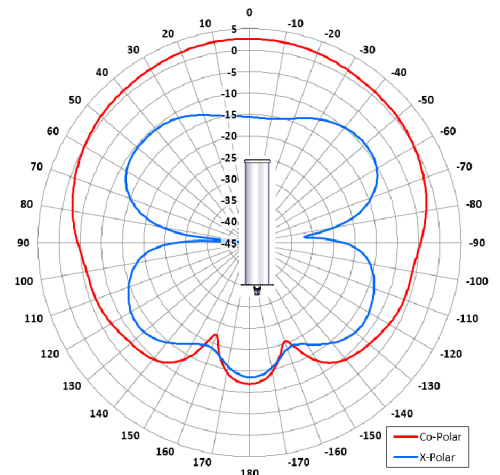
Key Features

End-fire Antenna For Meteorological Satellite Uplink Application

Rugged Marine Environment

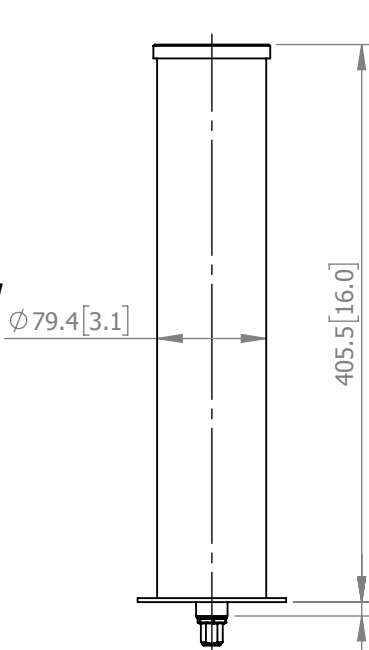


Elevation Polar Plot $\phi = 0^\circ$

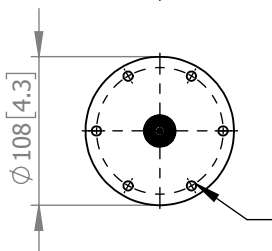


Elevation Polar Plot $\phi = 90^\circ$

SIDE VIEW



BASE VIEW



MOUNTED VIA 6 OFF
 $\phi 6.8$ (0.27) HOLES
 EQUI-SPACED ON
 92.1 (3.63) PCD

N(F)
 CONNECTOR

ELECTRICAL

Frequency:	400 - 408 MHz
Gain:	1.5 dBIC Nom.
Polarisation:	Right Hand Circular
Beamwidth:	360° (Az) x 160° (EI)
Axial Ratio:	3 dB Typ.
VSWR:	2:1 Max.
Power Rating:	50 W
Front to Back:	14 dB

MECHANICAL

Standard Finish	White
Mass:	1.0 Kg / 2.2 lbs
Temperature:	-20° to +50°C
Wind Loading:	5.3 Kg / 11.6 lbs @ 100 mph

MOUNTING OPTIONS

Kits Available:	N/A
See Separate Data Sheets	

DS: 0979-3 Issued: 300419
 Dimensions: mm [inches] L

Chelton Limited has a policy of continuous development and stress that the information provided is a guide only and does not constitute an offer or contract or part thereof. Whilst every effort is made to ensure the accuracy of the information contained in this brochure, no responsibility can be accepted for any errors or omissions.

The copyright of antenna designs and images is copyright protected and owned by Chelton Limited.
 ©Chelton Limited

For further information please contact: Chelton Limited, Lambda House, Cheveley, Newmarket, Suffolk CB8 9RG, UK.
 T: +44 (0)1638 732 177
 E: newmarket.sales@chelton.com
 W: www.chelton.com/microwave