

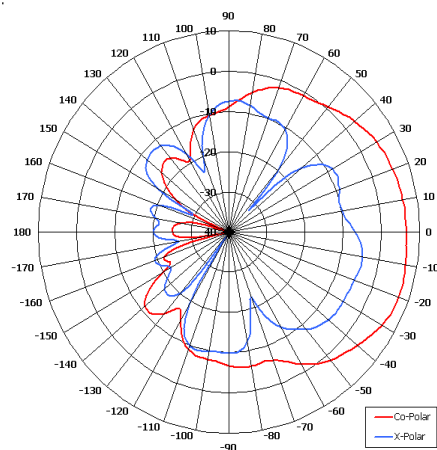
DLPA7-2050-DS45/1107

Directional Antenna

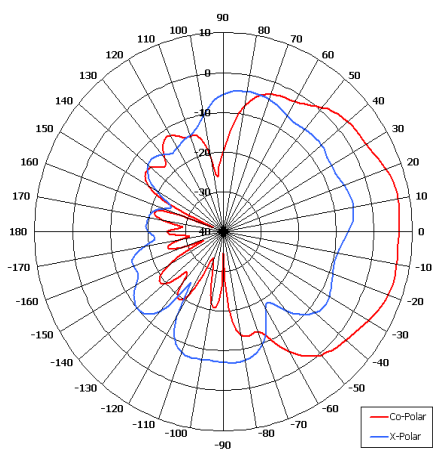


Key Features

- Designed for DAS Applications
- Dual Slant Polarisation
- Suitable for Indoor Applications
- Low Profile
- Integrated Cable Options

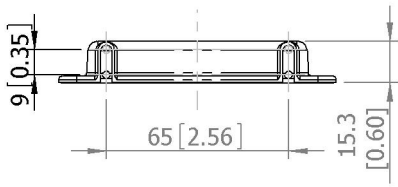


Azimuth Pattern

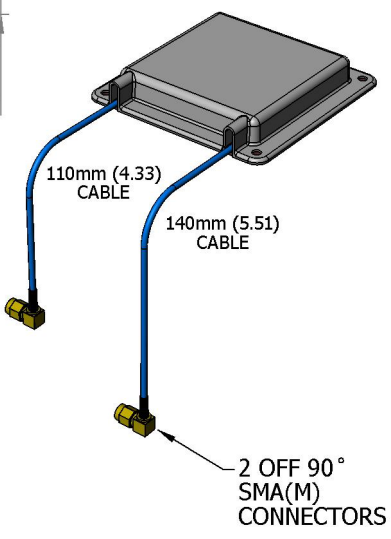
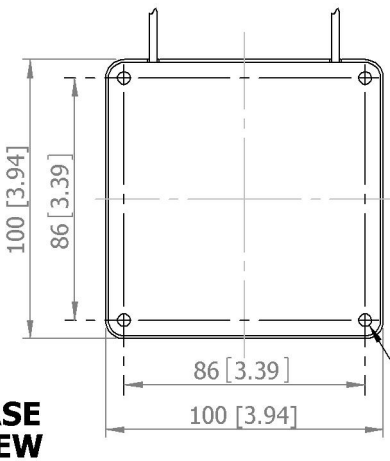


Elevation Pattern

SIDE VIEW



BASE VIEW



MOUNTED VIA 4 OFF Ø4.5 [0.18] HOLES

ELECTRICAL

Frequency	1.920 - 2.175 GHz
Gain	7.5 dBi Nom
Polarisation	Dual Slant +/-45°
Beamwidth	65° (Az) x 65° (El) Typ
Cross Polar	>12 dB
VSWR	2:1 Max
Power Rating	10 W
Front to Back	>24 dB

MECHANICAL

Standard Finish	ABS Radome
	Tinned PCB Backplate
Mass	85g (3.0 oz)
Temperature	-20° to +50°C
Wind Loading	N/A
MOUNTING OPTIONS	
Kits Available	N/A
See separate data sheets	

ADDITIONAL NOTES

Issued 041110

Chelton Limited has a policy of continuous development and stress that the information provided is a guide only and does not constitute an offer or contract or part thereof. Whilst every effort is made to ensure the accuracy of the information contained in this brochure, no responsibility can be accepted for any errors or omissions.

The copyright of antenna designs and images is copyright protected and owned by Chelton Limited.
©Chelton Limited

For further information please contact: Chelton Limited, Lambda House, Cheveley, Newmarket, Suffolk CB8 9RG, UK.
T: +44 (0)1638 732 177
E: newmarket.sales@chelton.com
W: www.chelton.com/microwave