

SA17-60-2.3R/1461

Sector Antenna



Key Features

Designed for WiMAX/LTE

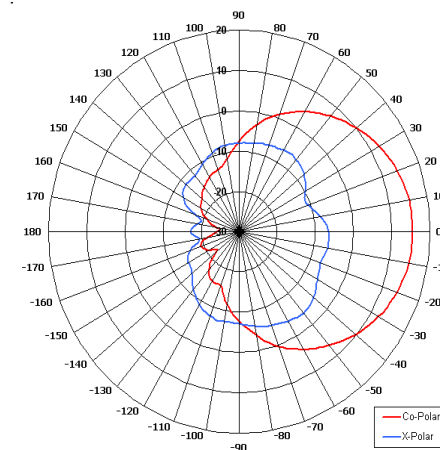
Applications

Suitable for Multiple Applications

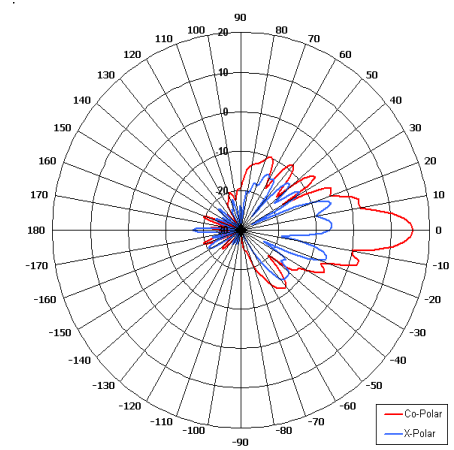
High Gain

Low Profile

Adjustable Mounting Kit



Azimuth Pattern



Elevation Pattern

ELECTRICAL

Frequency	2.20 - 2.40 GHz
Gain	15.5 dBiC Typ
Polarisation	Right Hand Circular
Beamwidth	57° (Az) x 10° (El) Approx
Cross Polar	<3.0 dB Typ
VSWR	1.5:1
Power Rating	50 W
Front to Back	>30 dB
Temperature	-30°C to +70° Non-Operational -20°C to +50° C Operational

MECHANICAL

Standard Finish	White Radome
Mass	1.2 Kg (2.75 lbs) excl MK
Wind Loading	16.8 Kg(36.9lbs) @ 100mph

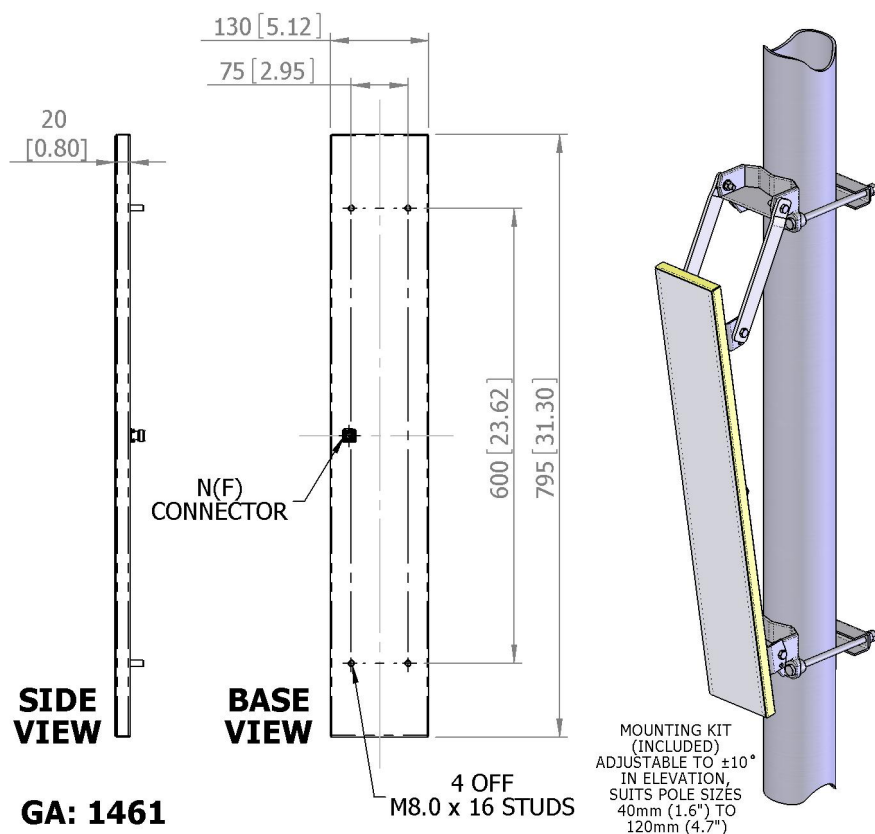
MOUNTING OPTIONS

Kits Available	MK1/A (included)
----------------	------------------

See separate data sheets

ADDITIONAL NOTES

Issued 200810



Chelton Limited has a policy of continuous development and stress that the information provided is a guide only and does not constitute an offer or contract or part thereof. Whilst every effort is made to ensure the accuracy of the information contained in this brochure, no responsibility can be accepted for any errors or omissions.

The copyright of antenna designs and images is copyright protected and owned by Chelton Limited.
©Chelton Limited

For further information please contact: Chelton Limited,
Lambda House, Cheveley,
Newmarket, Suffolk CB8 9RG, UK.
T: +44 (0)1638 732 177
E: newmarket.sales@chelton.com
W: www.chelton.com/microwave