

SVD2-7200/1603

Omni Antenna

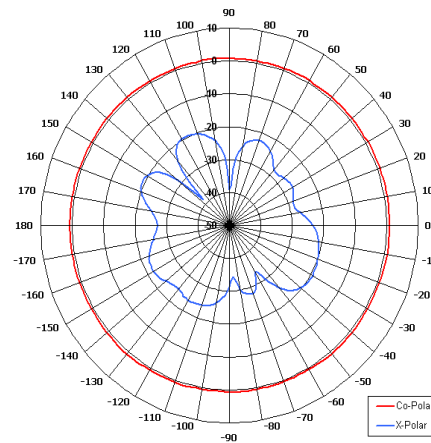
Key Features

Designed for Broadcast Applications

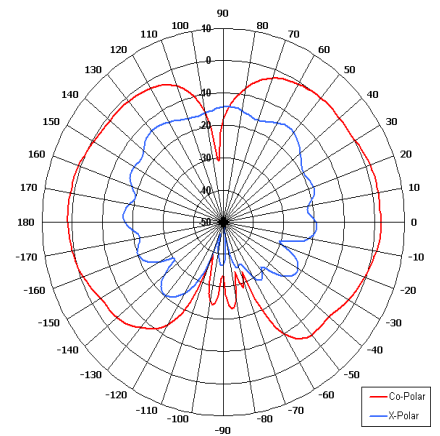
Pattern - Omni Directional

Lightweight Design

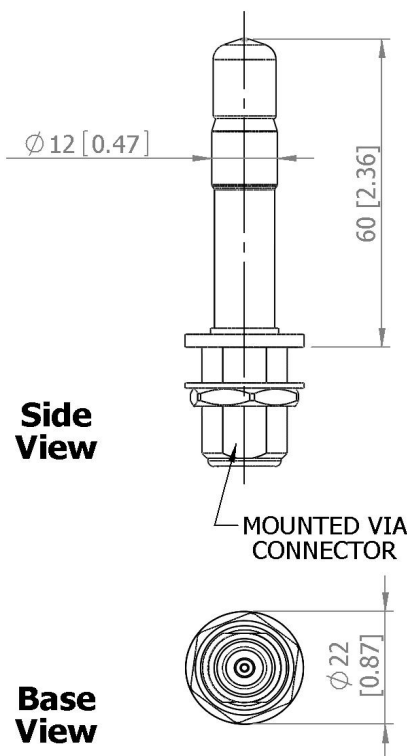
Low Profile Design



Azimuth Pattern

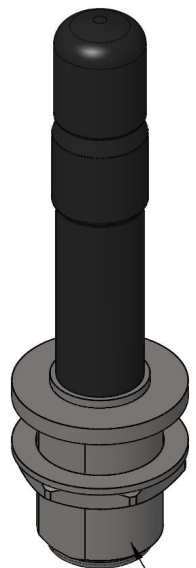


Elevation Pattern



Side View

Base View



N(F) CONNECTOR

ELECTRICAL

Frequency	6.0 - 7.4 GHz
Gain	2 dBi Nom
Polarisation	Linear (Vertical)
Beamwidth	360° (Az) x 80° (El) Approx
Cross Polar	15 - 20 dB Typ
VSWR	2:1 Max
Power Rating	20W
Front to Back	N/A

MECHANICAL

Standard Finish	Matt Black
Mass	48g (1.68 oz) Approx
Temperature	-20° to +50°C
Wind Loading	0.12 kg/0.26lbs @ 100mph

MOUNTING OPTIONS

Kits Available	MK5
See separate data sheets	

ADDITIONAL NOTES

GA: 1603

Issued 180310

Chelton Limited has a policy of continuous development and stress that the information provided is a guide only and does not constitute an offer or contract or part thereof. Whilst every effort is made to ensure the accuracy of the information contained in this brochure, no responsibility can be accepted for any errors or omissions.

The copyright of antenna designs and images is copyright protected and owned by Chelton Limited.
©Chelton Limited

For further information please contact: Chelton Limited, Lambda House, Cheveley, Newmarket, Suffolk CB8 9RG, UK.
T: +44 (0)1638 732 177
E: newmarket.sales@chelton.com
W: www.chelton.com/microwave