

OA10-2.4V/1655

Omni Antenna



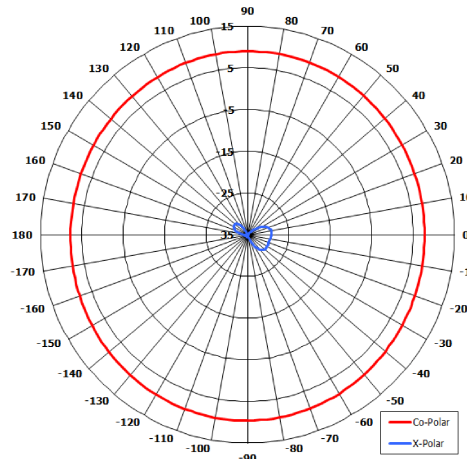
Key Features

Designed for Security Applications

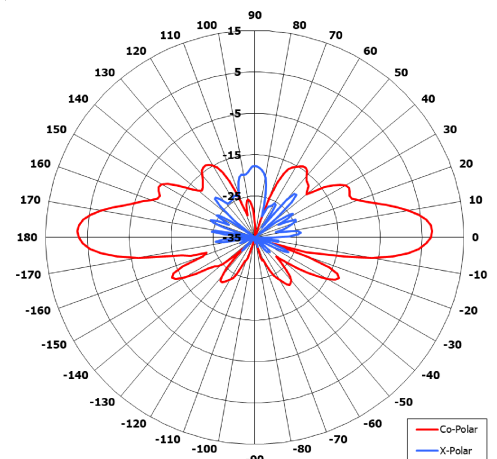
Suitable for Multiple Applications

High Gain

Low Azimuth Ripple

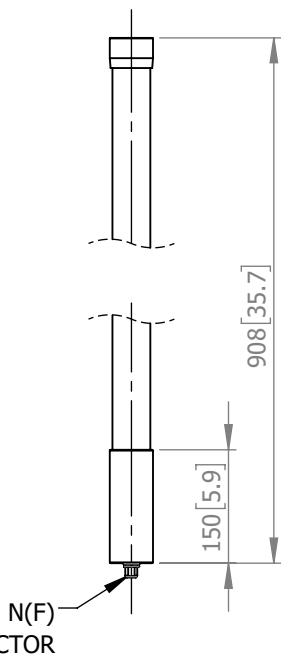


Azimuth Polar Plot
(similar product)

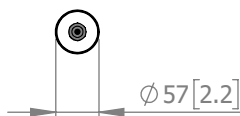


Elevation Polar Plot
(similar product)

SIDE VIEW



BASE VIEW



MOUNTED VIA
Ø57 [2.24]
SPIGOT



ELECTRICAL

Frequency:	2.30 - 2.55 GHz
Gain:	9.0 dBi Nom.
Polarisation:	Linear (Vertical)
Beamwidth:	360° (Az) x 13° (El)
Cross Polar:	>20 dB Typ.
VSWR:	2:1 Target (2.5:1 Max)
Power Rating:	25 W
Front to Back:	N/A
Electrical Tilt:	1.8° Nom.

MECHANICAL

Standard Finish:	Matt Black
Mass:	1.5 kg / 3.3 lbs
Temperature:	-20° to +50°C
Wind Loading:	84 N @ 100 mph

MOUNTING OPTIONS

Kits Available:	MK2/A
See Separate Data Sheets	

DS: 1655i1 Issued: 171019
Dimensions: mm [inches] X (H,M,L)

Chelton Limited has a policy of continuous development and stress that the information provided is a guide only and does not constitute an offer or contract or part thereof. Whilst every effort is made to ensure the accuracy of the information contained in this brochure, no responsibility can be accepted for any errors or omissions.

The copyright of antenna designs and images is copyright protected and owned by Chelton Limited.
©Chelton Limited

For further information please contact:
Chelton Limited,
Lambda House, Cheveley,
Newmarket, Suffolk CB8 9RG, UK.
T: +44 (0)1638 732 177
E: newmarket.sales@chelton.com
W: www.chelton.com/microwave