

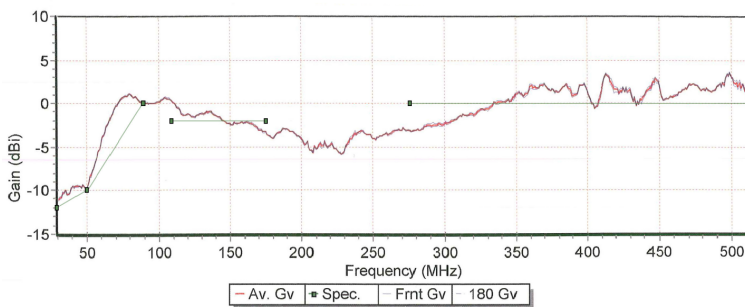
OA-0.03-0.50V/2425



VHF/UHF Whip Antenna

Provisional Specification

The most important thing we build is trust

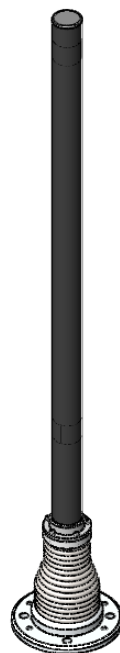


Gain (dBi)	Frequency (MHz)
-12	30
-10	50
0	88
-2*	118-174
0*	225-512

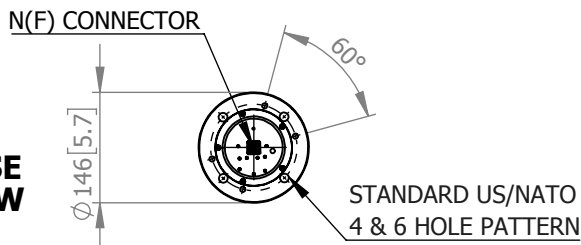
* Average

Gain figures for the antenna apply when mounted upon a 10m diameter nominal conductive flat groundplane.

SIDE VIEW



BASE VIEW



ELECTRICAL

Frequency:	30 - 88 MHz 118 - 174 MHz 225 - 512 MHz
Gain:	See Pattern Table.
Polarisation:	Linear (Vertical)
Beamwidth:	Omnidirectional
VSWR:	≤ 2.5:1
Power Rating:	100 W CW Max. (<88 MHz) 200 W CW Max. (>88 MHz)

MECHANICAL

Standard Finish:	Black
Mass:	3.17 Kg / 7 lbs
Temperature:	-40° to +71°C
Wind Loading:	53 N @ 100 mph

MOUNTING OPTIONS

Kits Available: N/A

See Separate Data Sheets

DS: 2425-B Issued: 081117
Dimensions: mm [inches] X

Chelton Limited trading as Cobham Antenna Systems, Microwave Antennas

Chelton Limited has a policy of continuous development and stress that the information provided is a guide only and does not constitute an offer or contract or part thereof. Whilst every effort is made to ensure the accuracy of the information contained in this Data Sheet, no responsibility can be accepted for any errors or omissions.

The copyright of antenna designs and images is copyright protected and owned by Chelton Limited.
©Chelton Limited.

For further information please contact:

Cobham Antenna Systems, Microwave Antennas, Lambda House, Cheveley, Newmarket, Suffolk, CB8 9RG, UK

T: +44 (0) 1638 732177
E: newmarket.sales@cobham.com
W: www.cobham.com/antennasystems/microwaveantennas